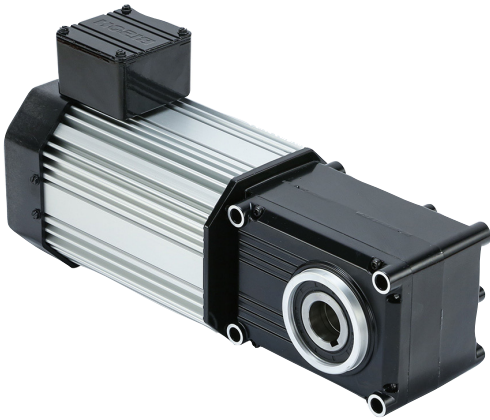


Maximum Efficiency Right-angle Gearmotors

730 115/230V Single Phase Dual Voltage/Dual Frequency (2-Stage)



The heavy duty PowerSTAR® 730 Series 2-stage 115/230V dual voltage/dual frequency single phase right-angle gearmotor offers up to 982 in-lbs of torque running continuously for reliable and energy efficient operation.

730 Series 115/230V 1PH Dual Voltage/Dual Frequency Ratios 10:1 to 60:1 -TEFC*

Part Number	Speed (RPM)		Rated Torque (in-lbs)		Input HP	Gear Ratio	OHL (lbs)	Rated Current 115V (Amps)		Rated Current 230V (Amps)	
	50Hz	60Hz	50Hz	60Hz				50Hz	60Hz	50Hz	60Hz
026-730E0010T	134	160	168	168	1/2	10	465	5.9	4.8	3.3	2.4
026-730E0015T	88	108	239	239	1/2	15	520	5.9	4.8	3.3	2.4
026-730E0020T	66	80	327	327	1/2	20	565	5.9	4.8	3.3	2.4
026-730E0030T	44	53	487	487	1/2	30	625	5.9	4.8	3.3	2.4
026-730E0040T	33	40	655	655	1/2	40	675	5.9	4.8	3.3	2.4
026-730E0050T	26	31	814	814	1/2	50	720	5.9	4.8	3.3	2.4
026-730E0060T	22	27	982	982	1/2	60	760	5.9	4.8	3.3	2.4

*Capacitors required - offered separately. See accessories on page 17

